

Disruptions Caused by AI in the Language Industry and Education



Is the AI a challenge or a threat?

Disruptions or innovations in bi-and multilingual communication tasks? 2016-2022

- Rise in Translation and processing demand for multilingual content
- Machine translation (MT), Computer-assisted translation CAT)
- Terminology management
- Neural MT for professional and non-professionals



Yandex



LLM- Large language models

- ▶ computational neural network-based language models with many parameters, trained on large amounts of text using machine learning algorithms
- ▶ ChatGPT and other AI-based platforms



Natural Language Processing

Natural Language Processing is the ability of a computer program to (understand?) human language as it is spoken and written. It is part of artificial intelligence.

What can we do with language data?

Summarization

Part-of-Speech-Tagging – assigns a tag to every token in a document based on its part of speech

Text categorization

Sentiment analysis – detects positive or negative sentiment from internal or external data sources. Commonly used to provide information about brands, **products or services**

Named-entity recognition – categorizes entities in text, e.g. names or locations; e.g. California (location), Mary (name)

Target groups

- Editors
- Marketing specialists
- Authors
- Academics and researchers
- Translators and interpreters
- Lawyers
- Teachers
-



Opportunities for all

- Visibility
- Leadership
- Networking
- New ideas and concepts
- Economization of tasks
- Labor opportunities
- Emerging domains for research

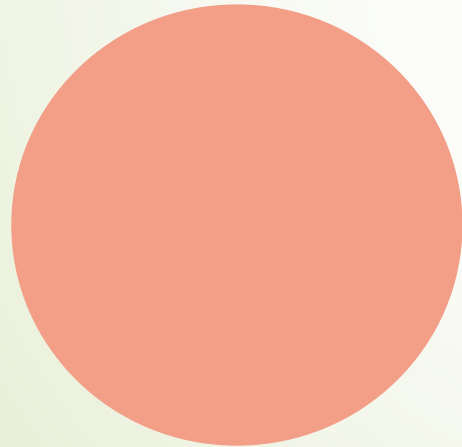




Benefits vs Costs of AI generated models

adopted by prof. Lynne Bowker

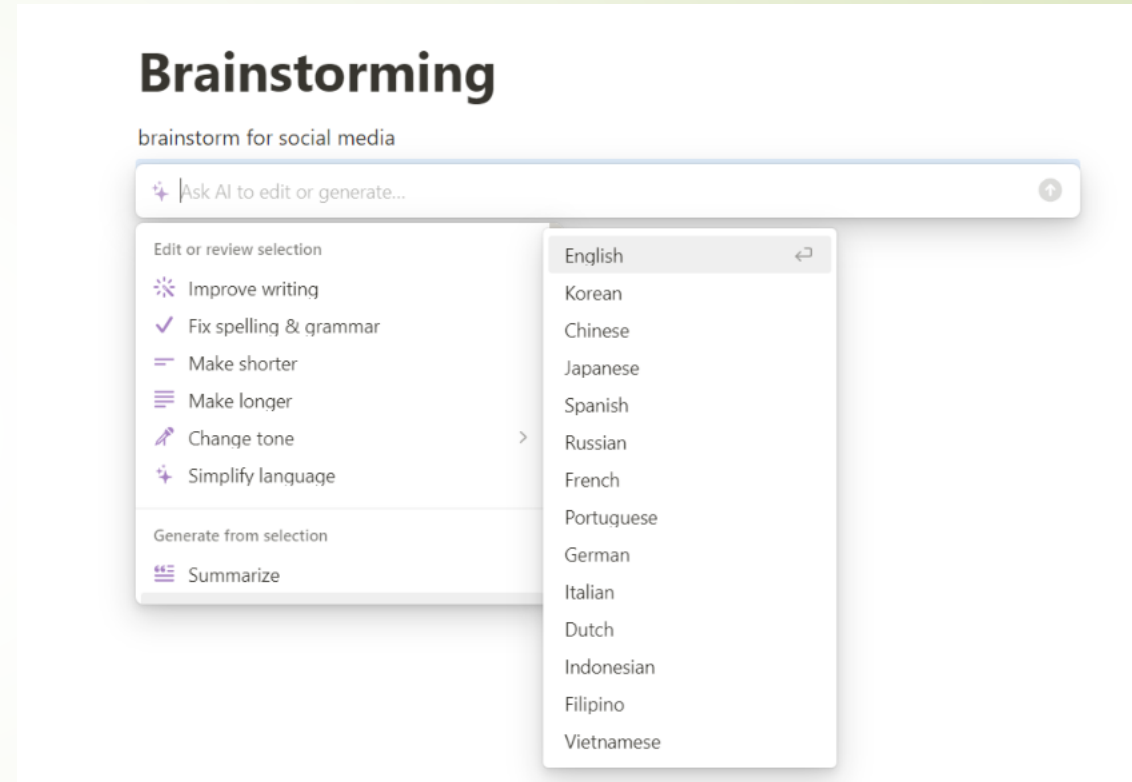
- Adaptable
- New market needs
- Productivity boost
- Inspiration



- Hallucinations
- Data Sensitivity
- Inconsistency/Unpredictability
- Lack of creativity
- Marginalization of low-resource languages
- Potential misuse
- Rates down/remuneration issues
- Privacy
- Data dispossession
-
-

AI Tool for processing language contents

- A. Writing
- B. Editing
- C. Translation
- D. Preparation of glossaries
- E. Comprehension of the read text
- F. Other (research, gisting)
- G.





CHAT GPT

- ▶ Founded in 2015.
- ▶ A language model that works on 570 GB text datasets.
- ▶ The Largest neural network at launching (175 billion parameters).
- ▶ It is able to predict the next token given a sequence of tokens.
- ▶ It is able to learn.
- ▶ GPT 3.5 data is only until 2021.
- ▶ Images on the internet are not accurate ("blurry jpeg").
- ▶ Artificial intelligence can "mislead" and give nonsensical answers.
- ▶ Confidential information.
- ▶ Inaccurate machine translation than other tools?
- ▶ Less accurate in less spoken languages - (see Hendy et al. 2023).
- ▶ Comparable for EN > EC general, less accurate for EN > DE + domain specific - (Savenkov 2023).

Chatbots and Platforms

Chatbots:

Bing

Google Bard

Platforms:

GPT 3,5

ChatGPT Plus

Phrase

Grammarly

Gaby-T

Notion

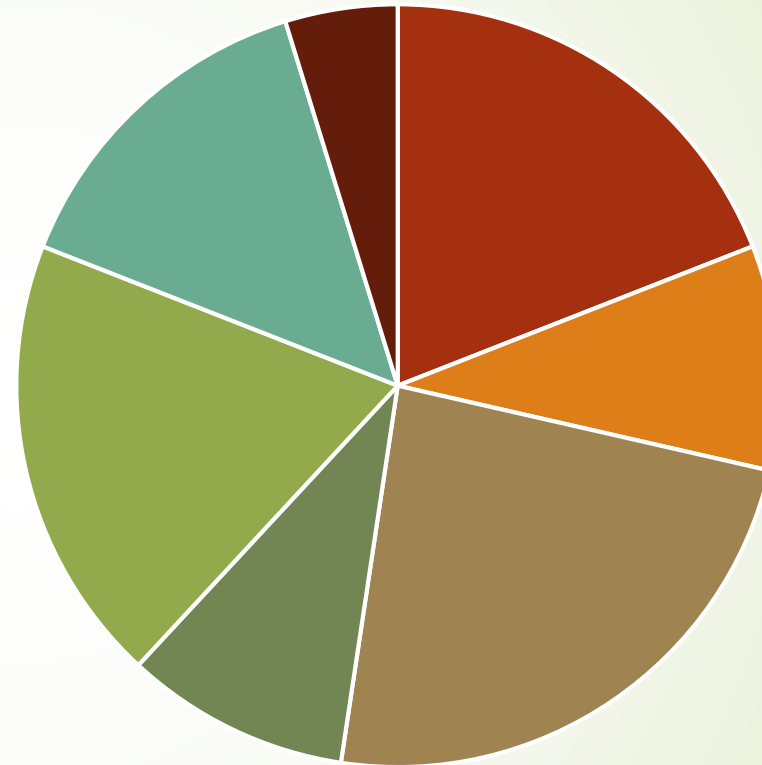
CoTranslatorAI

Other:

DeepL

Memrise (for language learning)

....

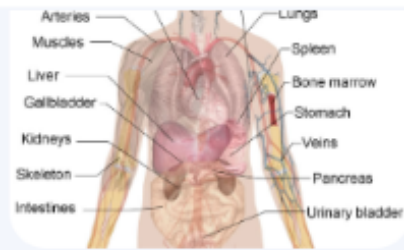


■ Writing ■ Editing ■ Translation ■ Glossaries ■ Text understanding ■ Others ■ No experience

What else is AI good for?

AI does not replace professional translation!

- Brainstorming,
- Expository writing,
- Correct spelling and grammar,
- Looking up vocabulary and terms
- Doing research to understand the theme (Scispace, Copilot, Textoptimizer)
- Searching equivalents, synonyms, antonyms, etc.,
- Condensing sentences,
- Breaking up run-on sentences,
- Reducing repetitions,
- Replacing words,
- Paraphrasing (ParaphraseTool, Simplif.ai, Genei)
- Formatting the text, such as headings,
- Changing the tone or style of the language content,
- Creating mono-, bi- or multilingual terminology glossaries
- Aligning documents
- Conversion of measure units
- Transcriptions (otter.ai, Sonix. ai, Whisper. ai)



Sure, here is a table describing the parts of the human body in the picture, how they work, and their Slovak equivalents:

English	Slovak	Function
Brain	Mozg	The control center of the body, responsible for thinking, feeling, and movement.
Heart	Srdce	A muscular organ that pumps blood throughout the body.
Lungs	Plúca	Organs that allow the body to breathe and take in oxygen.



Be inventive, do a lot of free brainstorming

- ▶ Enter a command for the AI in a common language (in most languages)
- ▶ Don't be afraid to use creative prompts, such as "10 unconventional ideas".
- ▶ Select expressions from information gathered through brainstorming
- ▶ Create text from your own ideas
- ▶ Create a longer/shorter...
- ▶ Write a text based on the assignment
- ▶ Write a text from an outline point
- ▶ Write a text from a series of outline points
- ▶ Translate the text into another language



LLM Limitations

- ▶ variations in training data
- ▶ harmful effects in biased responses
- ▶ training data blind spots hinder the model
- ▶ the scope of the datasets is limited
- ▶ ChatGPT has limited knowledge of events before 2021
- ▶ ChatGPT models have inaccurate responses
- ▶ it produces incorrect answers without realising that the answer is not based on reality
- ▶ e.g. the model can generate a price quote based only on the training data



AI Prospectives



- Proactive vs. Reactive approach (critical, decision-making);
- Mobilizing associations (guidelines, policies);
- Diversifying skillsets (consulting);
- Defining use cases (where and why);
- Developing creativity (broadening contexts)
- Define legal frameworks
- Define the educational goals (professionals, experts, clients)

Questions?

Thank you for your attention

jozef.stefcik@euba.sk

